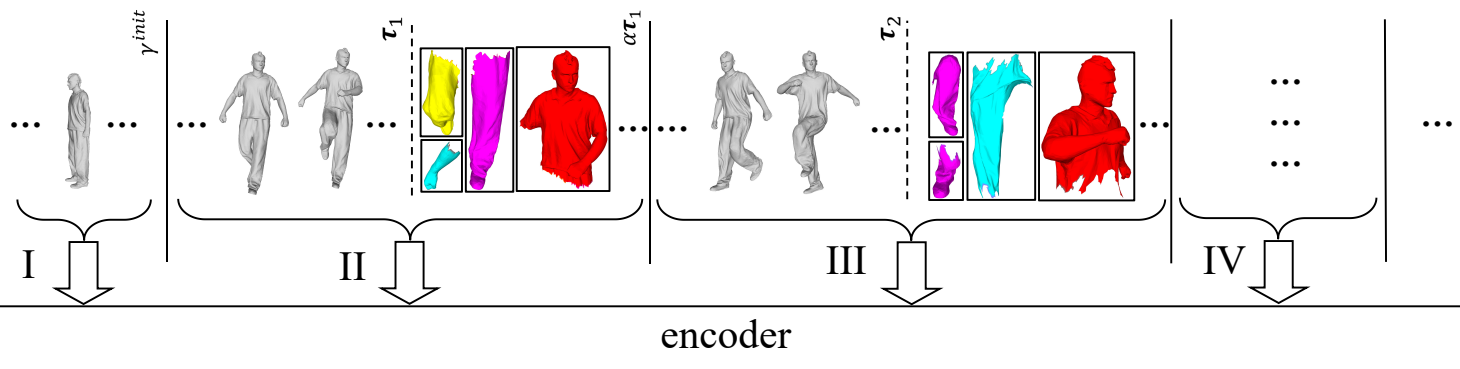


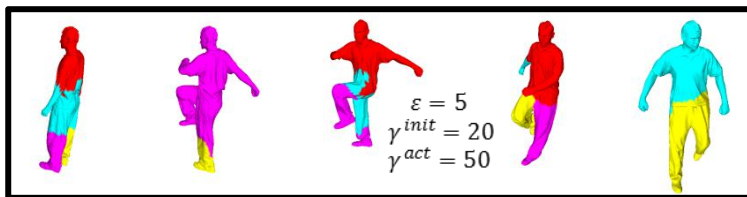
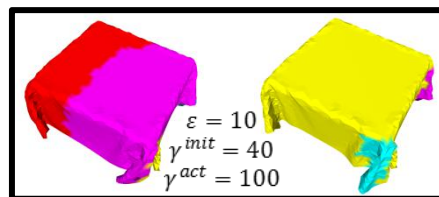
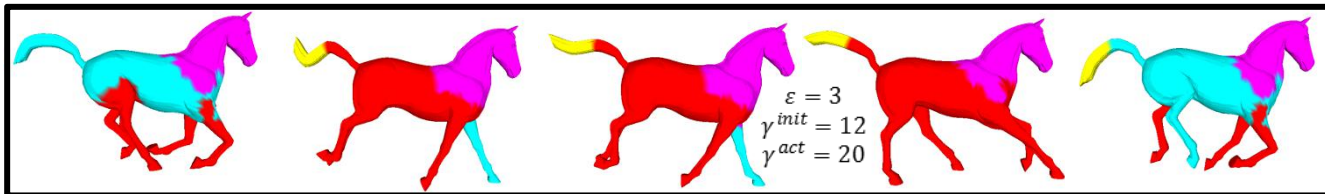
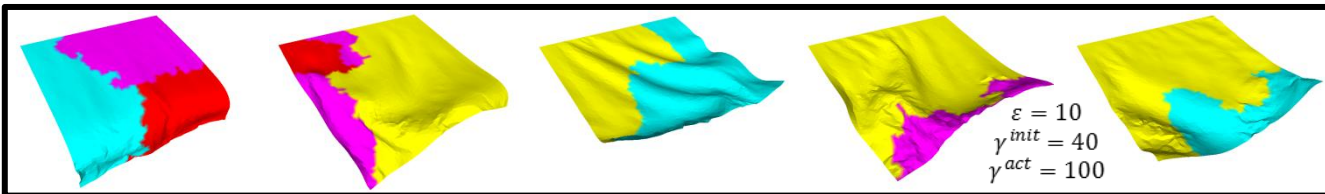
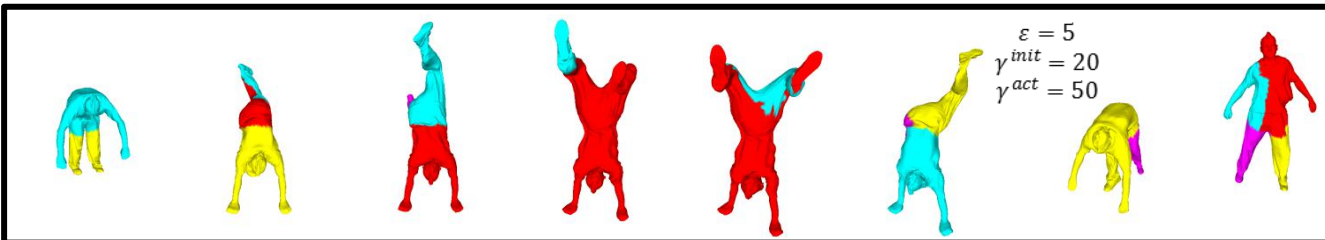
Four Cases in the Sequential Processing (Section 4.5)



In our method, we propose a Temporal Segmentation, which determines four possible types of the animation block to be processed by encoder.

- I . None of distinct behaviors has been detected at the initial temporal cut step.
- II . The spatial segmentation has been conducted and a temporal segmentation boundary has been detected.
- III . The spatial segmentation has been conducted and a temporal segmentation boundary has not been detected within the maximal possible range.
- IV . When Type 3 happens, we can directly reuse the previously obtained spatial segmentation to compute the temporal segmentation.

Spatio-temporal Segmentation Results

March*Cloth**Horse**Jump**Flag**Handstand*

Reconstruction Errors after Compression

